



BackFlange

Data Sheet

General Characteristics of the Round Back Roof Jack with Curb Mount Flange, BackFlange.

The Round Back Roof Jack with Curb Mount Flange is used for ventilating bathroom fans or other duct applications. The curb mount flange is designed to fit on top of roof curbs on flat roofs. In addition, the round design is aerodynamic to withstand wind speeds up to 200 mph. It allows for maximum air to flow while alleviating back pressure. Most importantly, it comes in an array of sizes with an optional flat flange for sloped roofs.

The Round Back Roof Jack with Curb Mount Flange is engineered to stop insects and wildlife from entering the duct. The roof vent is also designed to prevent rain or snow from entering. These vents have an all-aluminum construction. To clarify, this means they are durable, lightweight, and will not rust.

The tailpipe is 2 inches long and is corrugated at the bottom to fit existing ductwork. This allows for a quick and easy installation.

Product Applications of the Round Back Roof Jack with Curb Mount Flange, BackFlange.

BackFlange is used for ventilating bathroom fans or other duct applications.

Warranty of the Round Back Roof Jack with Curb Mount Flange, BackFlange.

Manufacturer's Warranty: 1-Year



**Active
Ventilation
Products**

Specific Characteristics of the Round Back Roof Jack with Curb Mount Flange, BackFlange.

Item #	Manufacturing #	Diameter	Tall Collar	NFA		Application per Sq. Foot		Weight and Dimensions with Packaging	
				Net Free Area Sq. in.	Sq. feet.	1/150	1/300	Lbs.	W,H,D In
USBJF-001	RBV-3-C2-CMF-TP	3"	2"	7	0.05	14	29	0.75	9,9,9
USBJF-002	RBV-3-C4-CMF-TP	3"	4"	7	0.05	14	29	1	9,11,9
USBJF-003	RBV-4-C2-CMF-TP	4"	2"	12	0.08	25	50	1	10,9,10
USBJF-004	RBV-4-C4-CMF-TP	4"	4"	12	0.08	25	50	1.5	10,11,10
USBJF-005	RBV-5-C2-CMF-TP	5"	2"	19	0.13	39	79	1.5	11,9,11
USBJF-006	RBV-5-C4-CMF-TP	5"	4"	19	0.13	39	79	2	11,11,11
USBJF-007	RBV-6-C2-CMF-TP	6"	2"	28	0.19	58	116	2	12,10,12
USBJF-008	RBV-6-C4-CMF-TP	6"	4"	28	0.19	58	116	2.5	12,12,12
USBJF-009	RBV-7-C2-CMF-TP	7"	2"	38	0.26	79	158	2.5	13,10,13
USBJF-010	RBV-7-C4-CMF-TP	7"	4"	38	0.26	79	158	3	13,12,13
USBJF-011	RBV-8-C2-CMF-TP	8"	2"	50	0.35	104	208	3	14,10,14
USBJF-012	RBV-8-C4-CMF-TP	8"	4"	50	0.35	104	208	3.5	14,12,14
USBJF-013	RBV-9-C2-CMF-TP	9"	2"	63	0.44	131	262	3.5	15,10,15
USBJF-014	RBV-9-C4-CMF-TP	9"	4"	63	0.44	131	262	4	15,12,15
USBJF-015	RBV-10-C2-CMF-TP	10"	2"	78	0.54	162	325	4	16,10,16
USBJF-016	RBV-10-C4-CMF-TP	10"	4"	78	0.54	162	325	4.5	16,12,16

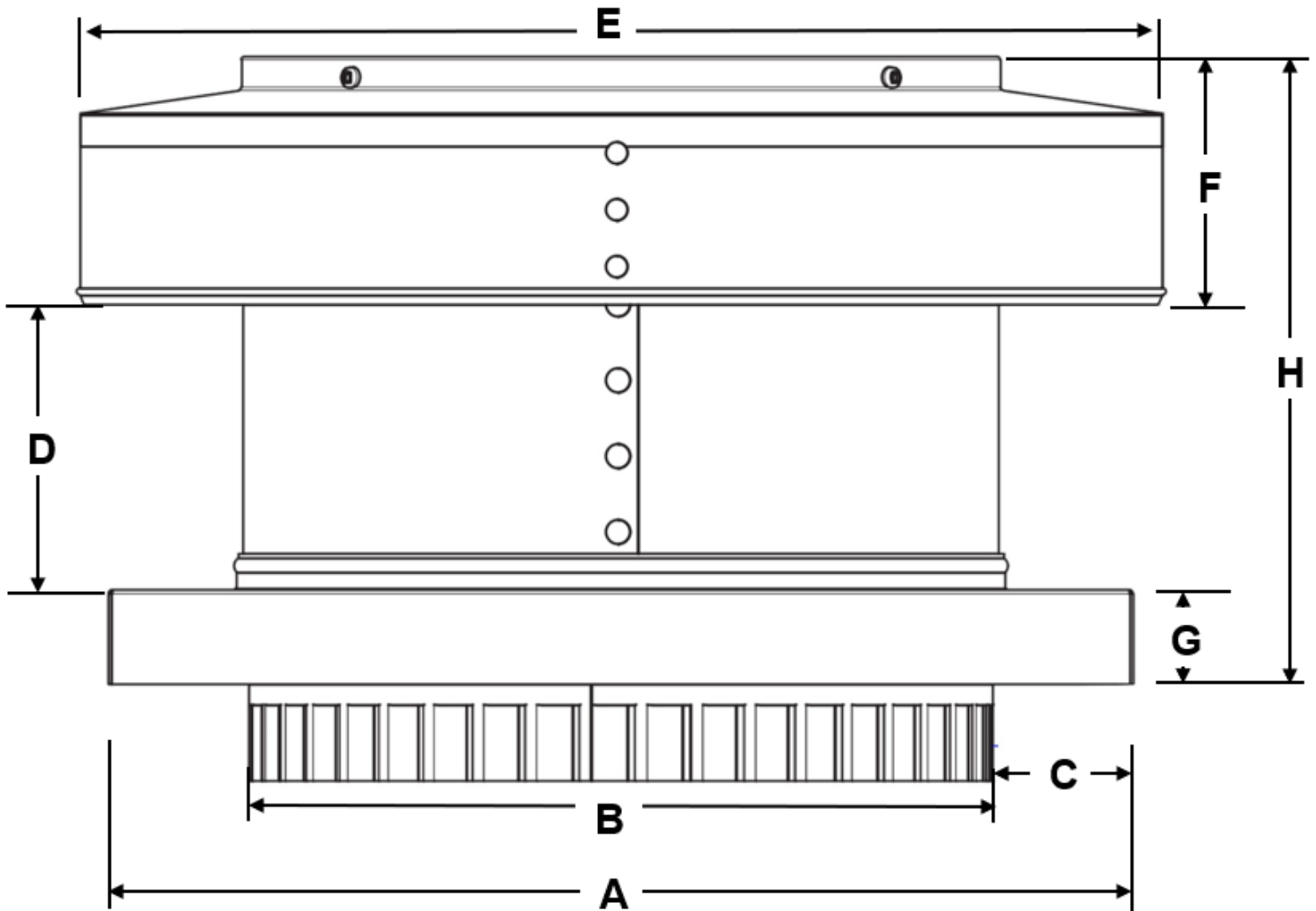


BackFlange

Data Sheet

Specific Characteristics of the Round Back Roof Jack with Curb Mount Flange, BackFlange.

Series		A	B	C	D	E	F	G	H
USBJF-001	RBV-3-C2-CMF-TP	6.5"	3"	1.7"	2"	5.5"	2"	1.2"	5.2"
USBJF-002	RBV-3-C4-CMF-TP	6.5"	3"	1.7"	4"	5.5"	2"	1.2"	7.2"
USBJF-003	RBV-4-C2-CMF-TP	7.5"	4"	1.7"	2"	7.2"	2"	1.2"	5.2"
USBJF-004	RBV-4-C4-CMF-TP	7.5"	4"	1.7"	4"	7.2"	2"	1.2"	7.2"
USBJF-005	RBV-5-C2-CMF-TP	8.5"	5"	1.7"	2"	8.2"	2"	1.2"	5.2"
USBJF-006	RBV-5-C4-CMF-TP	8.5"	5"	1.7"	4"	8.2"	2"	1.2"	7.2"
USBJF-007	RBV-6-C2-CMF-TP	9.5"	6"	1.7"	2"	9.2"	3"	1.2"	6.2"
USBJF-008	RBV-6-C4-CMF-TP	9.5"	6"	1.7"	4"	9.2"	3"	1.2"	8.2"
USBJF-009	RBV-7-C2-CMF-TP	10.5"	7"	1.7"	2"	10.2"	3"	1.2"	6.2"
USBJF-010	RBV-7-C4-CMF-TP	10.5"	7"	1.7"	4"	10.2"	3"	1.2"	8.2"
USBJF-011	RBV-8-C2-CMF-TP	11.5"	8"	1.7"	2"	11.2"	3"	1.2"	6.2"
USBJF-012	RBV-8-C4-CMF-TP	11.5"	8"	1.7"	4"	11.2"	3"	1.2"	8.2"
USBJF-013	RBV-9-C2-CMF-TP	12.5"	9"	1.7"	2"	12.2"	3"	1.2"	6.2"
USBJF-014	RBV-9-C4-CMF-TP	12.5"	9"	1.7"	4"	12.2"	3"	1.2"	8.2"
USBJF-015	RBV-10-C2-CMF-TP	13.5"	10"	1.7"	2"	14.2"	3"	1.2"	6.2"
USBJF-016	RBV-10-C4-CMF-TP	13.5"	10"	1.7"	4"	14.2"	3"	1.2"	8.2"

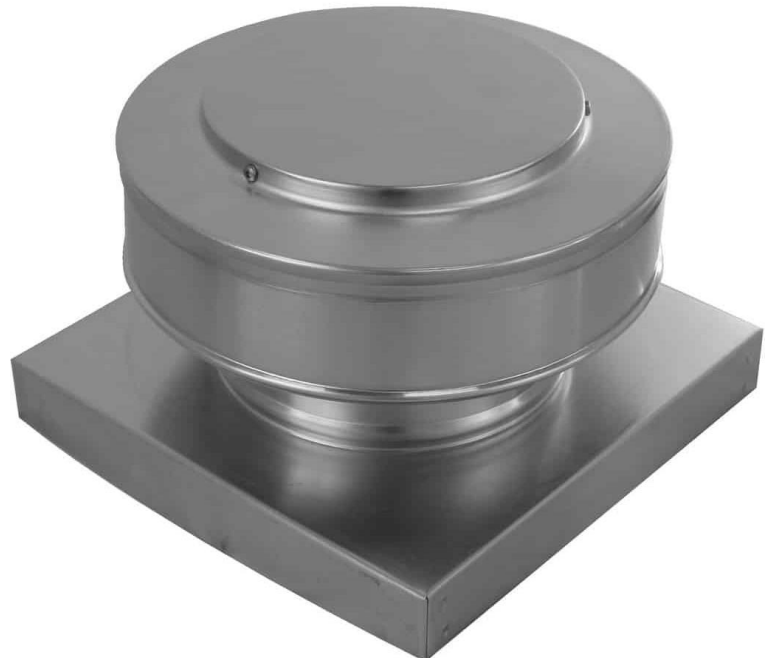




BackFlange

Data Sheet

Gallery Images of the Round Back Roof Jack with Curb Mount Flange, BackFlange.





BackFlange

Data Sheet



ID	Author	Description Error	Description Update	Supervisor Name
V1	Marcela Roldán	Technical Sheet Nueva	Technical Sheet Nueva	J.L.