

LumiLed

Características Generales de los Luminarios LEDS para Empotrar LumiLed

Los Luminarios LEDS para Empotrar LumiLed, cuentan con un diseño especial que le permite disipar el calor. Esto aunado a su nuevo aluminio ambiental, lo hace un producto de confianza con un estilo novedoso, estético y durable.

Tiene un diámetro de corte del falso techo de 80 mm.

LumiLed, ofrece un aspecto y diseño compacto, crea una iluminación suave y natural, que garantiza el confort visual.

Con un consumo de apenas 5 W que permite ahorrar energía.

Es muy fácil y segura la instalación.

Su larga duración de 35000 horas pone fin al problema de reposición de lámparas.

LumiLed, tiene un Índice de Protección de entrada de cuerpos sólidos y humedad de 60 IP.

Está fabricado en Aluminio con terminado en color Blanco y Níquel Satín.

Incluye una balastra para el funcionamiento a Corriente Alterna Domestica.

Aplicaciones de los Luminarios LEDS para Empotrar LumiLed

Los Luminarios LEDS para Empotrar LumiLed, están indicadas para todos los usos, creando un ambiente decorativo, tanto a nivel doméstico como en centros comerciales, hoteles, oficinas, edificios, restaurantes, teatros, plazas comerciales, hoteles, universidades, colegios, escuelas, etc.

Garantía de los Luminarios LEDS para Empotrar LumiLed

Las Luminarias LumiLed, tienen una garantía de 2 (dos) años sujeto a cláusulas VentDepot.

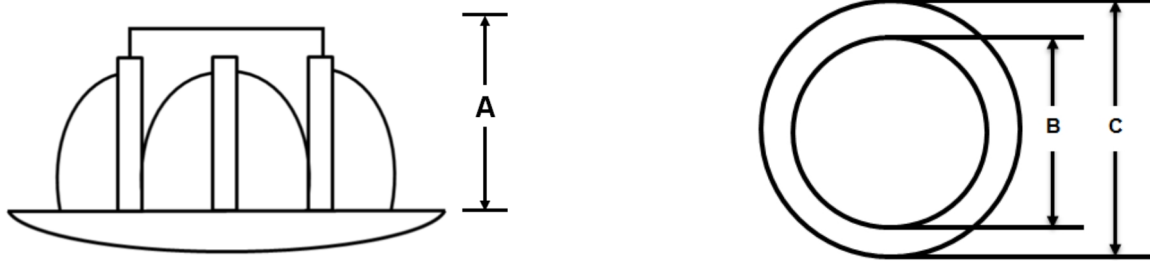


Características Técnicas Específicas de los Luminarios LEDS para Empotrar LumiLed.

Clave	Alimentación			Tipo de Lámpara	Ángulo de Apertura	Temperatura de Color	Color	Índice de Protección	Terminado	Material	Peso		Dimensiones con Empaque					
	VCA	Im	W								kg	lb	Base	Altura	Fondo	cm	in	cm
MXLMD-001	85/265	300	5	LED	120°	3000°K	Blanco Cálido	60	Blanco	Aluminio	0.10	0.22	12	5	5	2	12	5
MXLMD-002	85/265	300	5	LED	120°	6000°K	Blanco Frío	60	Blanco	Aluminio	0.10	0.22	12	5	5	2	12	5
MXLMD-003	85/265	300	5	LED	120°	3000°K	Blanco Cálido	60	Níquel Satín	Aluminio	0.10	0.22	12	5	5	2	12	5
MXLMD-004	85/265	300	5	LED	120°	6000°K	Blanco Frío	60	Níquel Satín	Aluminio	0.10	0.22	12	5	5	2	12	5

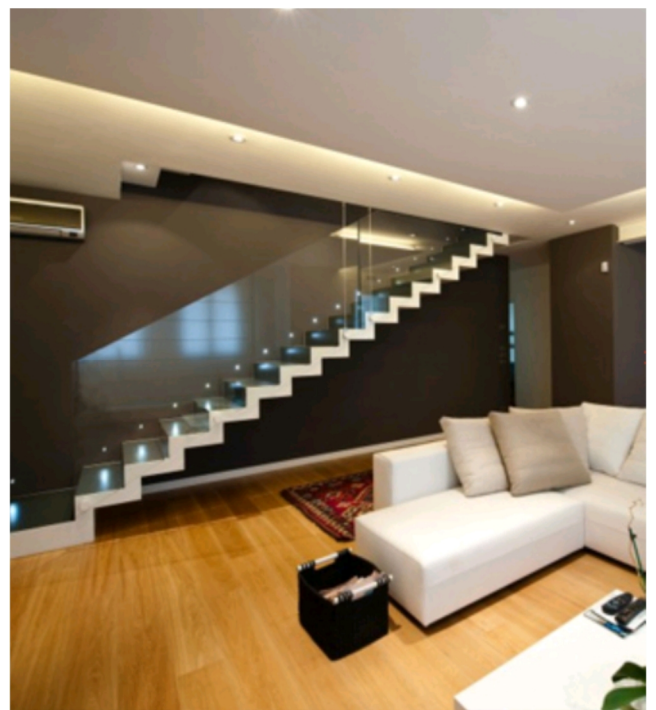
LumiLed

Dimensiones en mm



Clave	A	B	C
MXLMD-001	30	80	100
MXLMD-002	30	80	100
MXLMD-003	30	80	100
MXLMD-004	30	80	100

Galería





LumiLed

Tabla de Equivalencia de Watts		
LED Watts	Fluorescente Watts	Incandescente Watts
1	2	8
2	4	16
3	6	24
4	8	32
5	10	40
6	12	48
7	14	56
8	16	64
9	18	72
10	20	80
11	22	88
12	24	96
13	26	104
14	28	112
15	30	120
16	32	128
17	34	136
18	36	144
19	38	152
20	40	160
21	42	168
22	44	176
23	46	184
24	48	192
25	50	200
26	52	208
27	54	216
28	56	224
29	58	232
30	60	240
31	62	248
32	64	256
33	66	264
34	68	272
35	70	280
36	72	288
37	74	296
38	76	304
39	78	312
40	80	320
41	82	328
42	84	336
43	86	344
44	88	352
45	90	360
46	92	368
47	94	376
48	96	384
49	98	392
50	100	400
75	150	600
100	200	800
150	300	1200
200	400	1600



Índices de Protección IP: Tabla de Referencia

Primera Cifra de Característica		Grados de Protección a partes Peligrosas		Segunda Cifra de Característica		Grados de Protección a partes Peligrosas		
I.P	Ejemplo	Pruebas			I.P	Ejemplo	Pruebas	
0		No protegida	Sin protección		0		No protegida	Sin protección
1		Impide la penetración de una esfera de 50 mm de diámetro. Protege contra contacto accidental	Reverso de la mano		1		Protegida contra la caída vertical de gotas de agua	Goteo vertical
2		Impide la penetración de una esfera de 12mm de diámetro	Dedos u objetos análogos		2		Protegida contra la caída de gotas de agua con una inclinación máxima de 15°	Goteo vertical con una inclinación máxima de la envolvente de hasta 15° con respecto a la posición normal
3		Impide la penetración de una sonda de 2.5 mm de diámetro	Herramientas		3		Protegida contra la lluvia fina (pulverizada)	Agua pulverizada (lluvia) con una dirección de hasta 60° con la vertical
4		Impide la penetración de una sonda de 1 mm de diámetro	Alambres		4		Protegida contra las proyecciones de agua, penetración limitada permitida	Proyección de agua en todas direcciones limitadas
5		Protegida contra la penetración de polvo (acumulación no peligrosa)	Protección al polvo	Alambres	5		Protegida contra los chorros de agua, penetración limitada permitida	Agua proyectada con la ayuda de una boquilla en todas las direcciones
6		Estanqueidad total al polvo	Estanqueidad total al polvo		6		Protegida contra fuertes chorros de agua o contra la mar gruesa	Fuertes chorros de agua o contra la mar gruesa en todas las direcciones
					7		Protegida contra los efectos de la inmersión prolongada a las profundidades entre 150 mm y 1 m	Inmersión temporal
					8		Protegida contra la inmersión prolongada a las profundidades específicas	Inmersión prolongada en agua bajo las condiciones específicas por el fabricante*

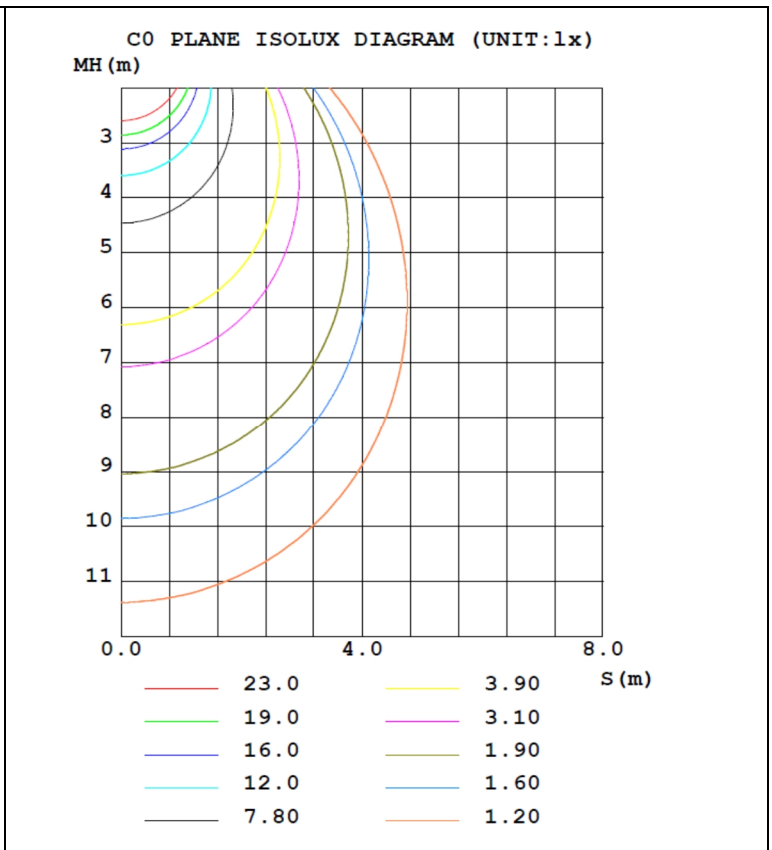
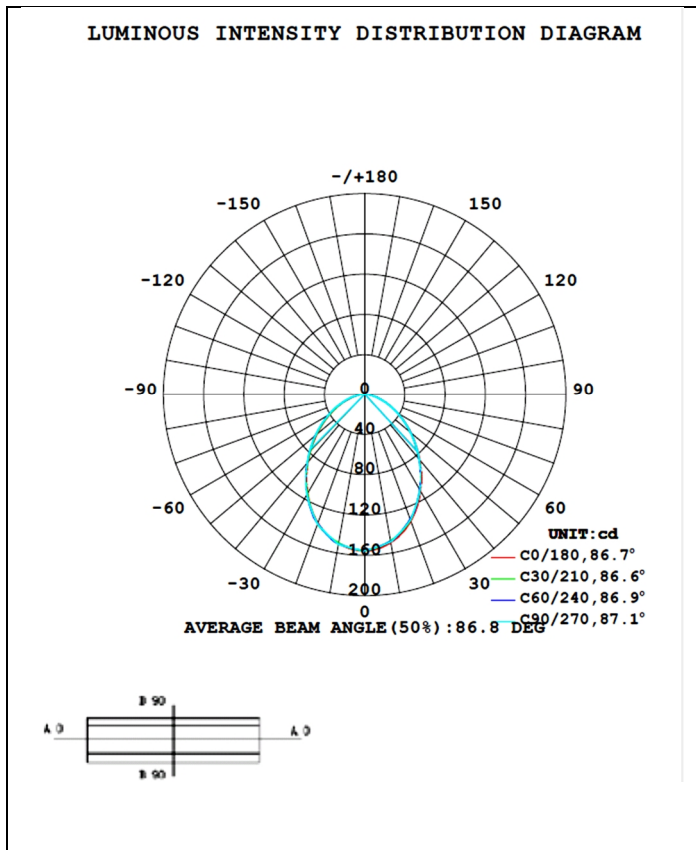
Ejemplo:

- **I.P. – 31:** Impide la penetración de una sonda de 2.5 mm de diámetro. Protegida contra la caída vertical de gotas de agua.
- **I.P. – 66:** Estanqueidad total al polvo. Protegida contra fuertes chorros de agua contra la mar gruesa.
- **I.P. – 01:** Sin protección. Protegida contra la caída vertical de gotas de agua.
- **I.P. – 62:** Estanqueidad total al polvo. Protegida contra la caída de gotas de agua con una inclinación máxima de 15°

LUMINAIRE PHOTOMETRIC TEST REPORT

Test:U:219.2V I:0.0490A P:5.750W PF:0.5300 Lamp Flux:450x1 lm		
NAME: MZLD-05008	TYPE	
DIM.: 0.100m	SPEC.:	SERIAL No.:1
MFR.: Mazzetti	SUR.:(R)d=0.065m	PROTECTION ANGLE:

DATA OF LAMP		PHOTOMETRIC DATA			
MODEL		Imax(cd)	155.4	S/MH(C0/180)	1.09
NOMINAL POWER(W)	5	LOR(%)	71.7	S/MH(C90/270)	1.08
RATED VOLTAGE(V)	220	TOTAL FLUX(lm)	322.60	η UP, DN(C0-180)	0.0,35.1
NOMINAL FLUX(lm)	450	CIE CLASS	DIRECT	η UP, DN(C180-360)	0.0,36.6
LAMPS INSIDE	1	η up(%)	0.0	CIBSE SHR NOM	1.25
TEST VOLTAGE(V)	219.2	η down(%)	71.7	CIBSE SHR MAX	1.25

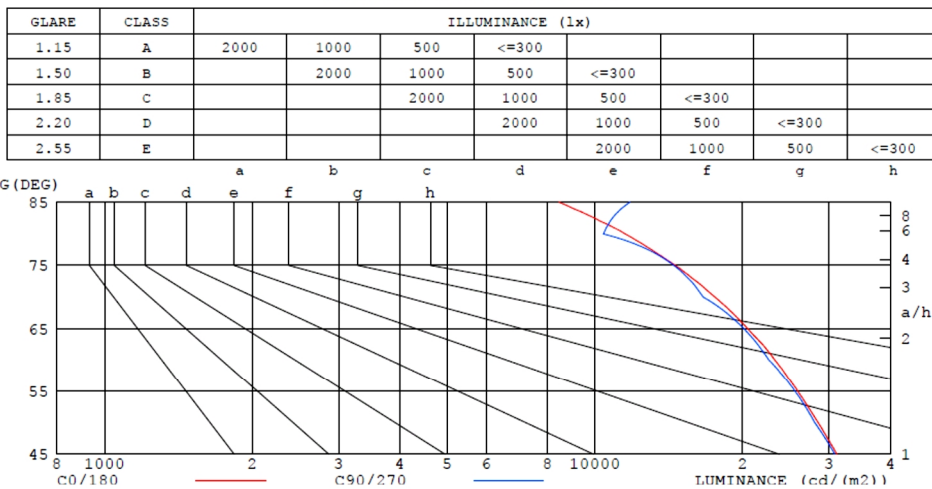


ZONAL FLUX DIAGRAM AND LUMINANCE LIMITATION CURVES

Zonal Flux Diagram:

γ	C0	C45	C90	C135	C180	C225	C270	C315	γ	Φ zone	Φ total	%lum.lamp
5	153.8	152.2	152.2	152.6	154.3	153.4	153.3	153.0	0-5	3.680	3.680	1.14,0.82
10	149.6	147.8	148.9	148.6	150.5	150.2	151.2	149.4	5-10	10.81	14.49	4.49,3.22
15	142.9	141.6	140.9	142.8	144.4	145.1	144.1	143.8	10-15	17.33	31.82	9.86,7.07
20	134.0	131.9	133.0	133.2	135.9	136.2	137.1	134.6	15-20	22.83	54.65	16.9,12.1
25	123.2	121.5	121.6	122.9	125.5	126.4	126.1	124.6	20-25	27.08	81.73	25.3,18.2
30	111.1	109.6	110.1	111.0	113.4	114.7	115.0	112.7	25-30	29.81	111.5	34.6,24.8
35	98.35	96.72	97.25	98.21	100.6	101.8	102.0	99.72	30-35	31.08	142.6	44.2,31.7
40	85.30	84.09	84.37	85.66	87.57	89.11	88.94	87.05	35-40	30.93	173.6	53.8,38.6
45	72.63	71.45	71.93	72.67	74.55	75.98	76.44	74.20	40-45	29.58	203.1	63.45,1
50	60.43	59.58	59.49	60.40	62.16	63.60	63.95	62.22	45-50	27.25	230.4	71.4,51.2
55	49.04	48.10	48.40	48.88	50.42	52.04	52.79	50.88	50-55	24.17	254.6	78.9,56.6
60	38.40	37.47	37.32	38.14	39.54	41.32	41.63	40.30	55-60	20.59	275.1	85.3,61.1
65	28.56	27.84	28.05	28.36	29.56	31.40	32.15	30.64	60-65	16.66	291.8	90.5,64.8
70	19.82	19.33	18.78	19.68	20.63	22.47	22.68	21.95	65-70	12.66	304.5	94.4,67.7
75	12.45	11.93	12.37	12.16	13.03	14.52	15.56	14.19	70-75	8.814	313.3	97.1,69.6
80	6.609	6.580	5.963	6.687	6.970	8.461	8.443	8.279	75-80	5.461	318.8	98.8,70.8
85	2.431	2.825	3.389	2.849	2.677	3.825	4.624	3.743	80-85	2.773	321.5	99.7,71.4
90	0.4601	0.7925	0.8153	0.7805	0.7635	0.6581	0.8055	0.6195	85-90	1.078	322.6	100,71.7
95									90-95			
100									95-100			
105									100-105			
110									105-110			
115									110-115			
120									115-120			
125									120-125			
130									125-130			
135									130-135			
140									135-140			
145									140-145			
150									145-150			
155									150-155			
160									155-160			
165									160-165			
170									165-170			
175									170-175			
180									175-180			
DEG				LUMINOUS INTENSITY:cd					UNIT:lm			

LUMINANCE LIMITATION CURVES



LUMINANCE cd/(m2)		
G (DEG)	C0/180	C90/270
85	8453	11783
80	11534	10406
75	14576	14483
70	17563	16636
65	20478	20112
60	23270	22619
55	25907	25573
50	28490	28044
45	31124	30825

LumiLed

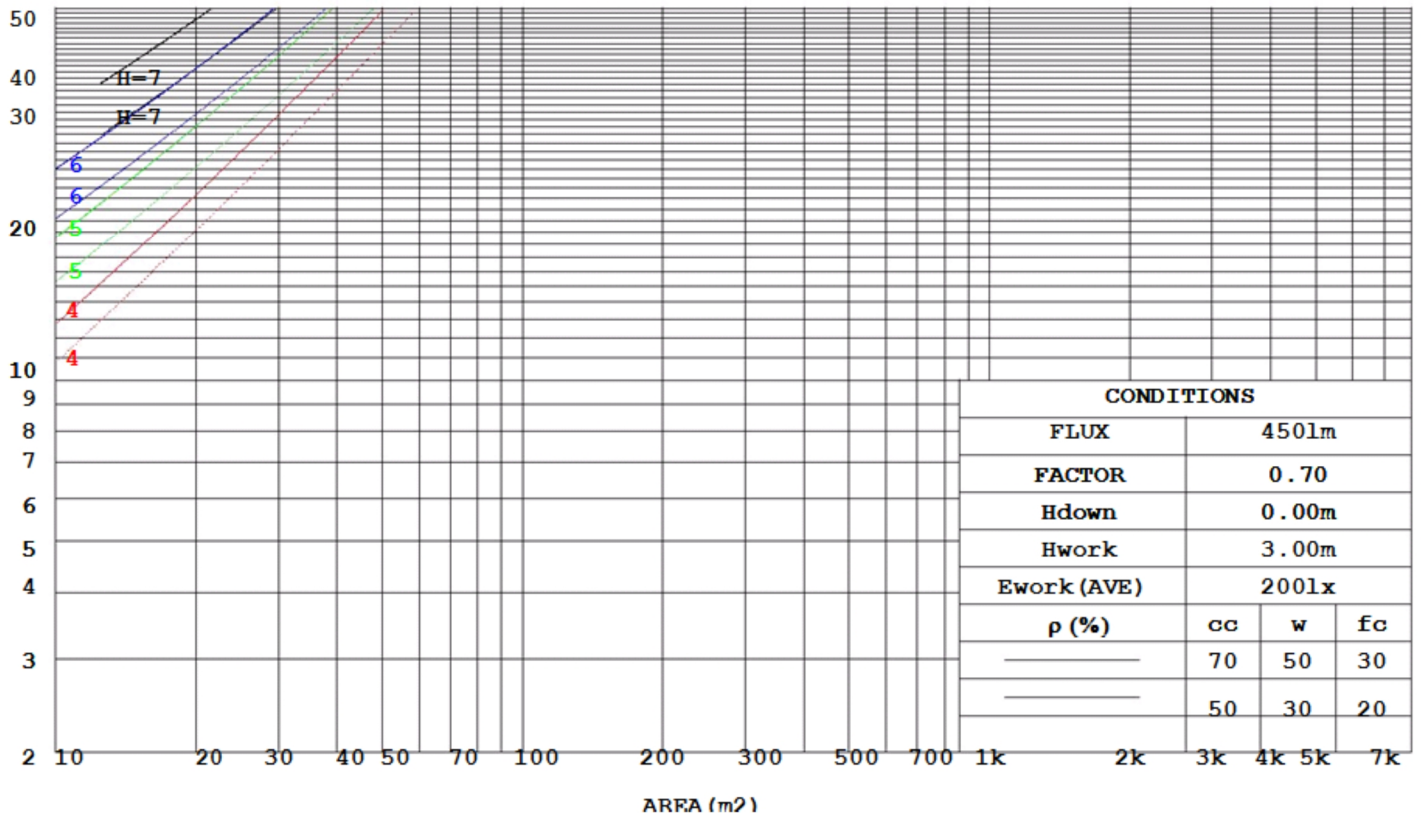
CU AND LUMINAIRE BUDGETARY ESTIMATE DIAGRAM

Test:U:219.2V I:0.0490A P:5.750W PF:0.5300			Lamp Flux:450x1 lm		
NAME: MZLD-05007		TYPE:			
DIM.: 0.105m		SPEC.:		SERIAL No.:1	
MFR.: Mazzetti		SUR.:(R)d=0.065m		PROTECTION ANGLE:	

ρ_{cc}	80%			70%			50%			30%			10%			0
ρ_w	50%	30%	10%	50%	30%	10%	50%	30%	10%	50%	30%	10%	50%	30%	10%	0
ρ_{fc}	20%			20%			20%			20%			20%			0
RCR	RCR:Room Cavity Ratio						Coefficients of Utilization(CU)									
0.0	.85	.85	.85	.83	.83	.83	.80	.80	.80	.76	.76	.76	.73	.73	.73	.72
1.0	.76	.73	.71	.74	.72	.69	.71	.69	.67	.68	.67	.65	.66	.65	.63	.62
2.0	.67	.63	.59	.66	.62	.58	.63	.60	.57	.61	.58	.56	.59	.56	.54	.53
3.0	.60	.54	.50	.59	.54	.50	.56	.52	.49	.55	.51	.48	.53	.50	.47	.46
4.0	.53	.48	.43	.53	.47	.43	.51	.46	.42	.49	.45	.42	.48	.44	.41	.40
5.0	.48	.42	.38	.47	.42	.38	.46	.41	.37	.45	.40	.37	.43	.39	.36	.35
6.0	.44	.38	.33	.43	.37	.33	.42	.37	.33	.41	.36	.33	.40	.36	.32	.31
7.0	.40	.34	.30	.39	.34	.30	.38	.33	.30	.37	.33	.29	.36	.32	.29	.28
8.0	.37	.31	.27	.36	.31	.27	.35	.30	.27	.34	.30	.27	.34	.29	.26	.25
9.0	.34	.28	.24	.33	.28	.24	.33	.28	.24	.32	.27	.24	.31	.27	.24	.23
10.0	.31	.26	.22	.31	.26	.22	.30	.26	.22	.30	.25	.22	.29	.25	.22	.21

LAMPS

LUMINAIRE BUDGETARY DIAGRAM



WEC AND CCE

Test:U:219.2V I:0.0490A P:5.750W PF:0.5300		Lamp Flux:450x1 lm	
NAME: MZLD-05007		TYPE:	
DIM.: 0.105m		SPEC.:	
MFR.: Mazzetti		SUR.:(R)d=0.065m	
		PROTECTION ANGLE:	

p cc	80%			70%			50%			30%			10%			0
p w	50%	30%	10%	50%	30%	10%	50%	30%	10%	50%	30%	10%	50%	30%	10%	0
p fc	20%			20%			20%			20%			20%			0
RCR	RCR:Room Cavity Ratio						Wall Exitance Coefficients(WEC)									
0.0																
1.0	.197	.112	.035	.192	.109	.035	.183	.105	.033	.174	.100	.032	.166	.096	.031	
2.0	.188	.103	.032	.183	.101	.031	.175	.097	.030	.168	.094	.029	.161	.091	.029	
3.0	.176	.094	.028	.172	.092	.028	.165	.089	.027	.158	.087	.027	.152	.084	.026	
4.0	.164	.085	.025	.160	.084	.025	.154	.082	.024	.148	.080	.024	.143	.077	.024	
5.0	.153	.078	.023	.150	.077	.022	.144	.075	.022	.139	.073	.022	.134	.072	.021	
6.0	.143	.071	.020	.140	.071	.020	.135	.069	.020	.130	.068	.020	.126	.066	.020	
7.0	.134	.066	.019	.131	.065	.019	.127	.064	.018	.122	.063	.018	.119	.062	.018	
8.0	.125	.061	.017	.123	.061	.017	.119	.060	.017	.115	.058	.017	.112	.057	.017	
9.0	.118	.057	.016	.116	.057	.016	.113	.056	.016	.109	.055	.016	.106	.054	.016	
10.0	.111	.053	.015	.110	.053	.015	.106	.052	.015	.103	.051	.015	.100	.051	.015	

p cc	80%			70%			50%			30%			10%			0
p w	50%	30%	10%	50%	30%	10%	50%	30%	10%	50%	30%	10%	50%	30%	10%	0
p fc	20%			20%			20%			20%			20%			0
RCR	RCR:Room Cavity Ratio						Wall Exitance Coefficients(WEC)									
0.0	.137	.137	.137	.117	.117	.117	.080	.080	.080	.046	.046	.046	.015	.015	.015	
1.0	.128	.112	.098	.109	.096	.085	.080	.080	.080	.043	.038	.034	.014	.012	.011	
2.0	.121	.095	.073	.103	.081	.063	.071	.056	.044	.041	.033	.026	.013	.011	.008	
3.0	.114	.082	.056	.098	.071	.048	.067	.049	.034	.039	.029	.020	.013	.009	.007	
4.0	.109	.072	.044	.093	.062	.038	.064	.043	.027	.037	.025	.016	.012	.008	.005	
5.0	.103	.064	.036	.089	.056	.031	.061	.039	.022	.035	.023	.013	.011	.007	.004	
6.0	.098	.058	.030	.085	.051	.026	.058	.035	.018	.034	.021	.011	.011	.007	.004	
7.0	.094	.053	.025	.081	.046	.022	.056	.032	.015	.032	.019	.009	.010	.006	.003	
8.0	.089	.049	.022	.077	.043	.019	.053	.030	.013	.031	.018	.008	.010	.006	.003	
9.0	.085	.046	.019	.073	.040	.016	.051	.028	.012	.030	.016	.007	.010	.005	.002	
10.0	.081	.042	.017	.070	.037	.015	.049	.026	.010	.028	.015	.006	.009	.005	.002	



Uncorrer UGR Table

Test:U:219.2V I:0.0490A P:5.750W PF:0.5300 Lamp Flux:450x1 lm		
NAME: MZLD-05007	TYPE:	
DIM.: 0.105m	SPEC.:	SERIAL No.:1
MFR.: Mazzetti	SUR.: (R)d=0.065m	PROTECTION ANGLE:
ceiling/cavity walls working plane	0.7 0.7 0.5 0.5 0.3 0.5 0.3 0.5 0.3 0.3 0.2 0.2 0.2 0.2 0.2	0.7 0.7 0.5 0.5 0.3 0.5 0.3 0.5 0.3 0.3 0.2 0.2 0.2 0.2 0.2
Room dimensions	Viewed crosswise	Viewed endwise
x = 2H y = 2H	23.6 25.0 23.8 25.2 25.4	23.5 24.9 23.8 25.1 25.3
3H	24.5 25.8 24.8 26.1 26.3	24.5 25.8 24.8 26.0 26.2
4H	24.9 26.1 25.2 26.3 26.7	24.8 26.0 25.1 26.3 26.5
6H	25.0 26.2 25.4 26.5 26.7	25.0 26.1 25.3 26.4 26.7
8H	25.1 26.2 25.4 26.5 26.7	25.0 26.1 25.3 26.4 26.7
12H	25.1 26.2 25.4 26.4 26.7	25.0 26.1 25.4 26.4 26.7
4H 2H	24.0 25.2 24.3 25.4 25.7	23.9 25.2 24.2 25.4 25.7
3H	25.1 26.2 25.4 26.5 26.8	25.0 26.1 25.4 26.4 26.7
4H	25.5 26.5 25.9 26.8 27.1	25.5 26.4 25.8 26.8 27.1
6H	25.8 26.7 26.2 27.0 27.4	25.7 26.6 26.1 26.9 27.3
8H	25.9 26.7 26.3 27.0 27.4	25.8 26.6 26.2 27.0 27.4
12H	25.9 26.6 26.3 27.0 27.4	25.9 26.6 26.3 27.0 27.4
8H 4H	25.6 26.4 26.0 26.8 27.2	25.6 26.4 26.0 26.8 27.1
6H	26.0 26.7 26.5 27.1 27.5	25.9 26.6 26.4 27.0 27.4
8H	26.1 26.7 26.6 27.2 27.6	26.1 26.7 26.5 27.1 27.5
12H	26.2 26.7 26.7 27.2 27.7	26.2 26.7 26.7 27.2 27.7
12H 4H	25.6 26.4 26.0 26.7 27.1	25.6 26.3 26.0 26.7 27.1
6H	26.0 26.6 26.5 27.0 27.5	26.0 26.5 26.4 27.0 27.4
8H	26.2 26.7 26.7 27.1 27.6	26.1 26.6 26.6 27.1 27.5
Variations with the observer position at spacings:		
S=1.0H	+0.3/-0.4	+0.3/-0.4
1.5H	+0.1/-0.2	+0.1/-0.2
2.0H	+0.5/-0.4	+0.5/-0.5

CIE Pub.117 Corrected 450.0 lm Total Lamp Luminous Flux.(8log(F/F0) = -2.8)

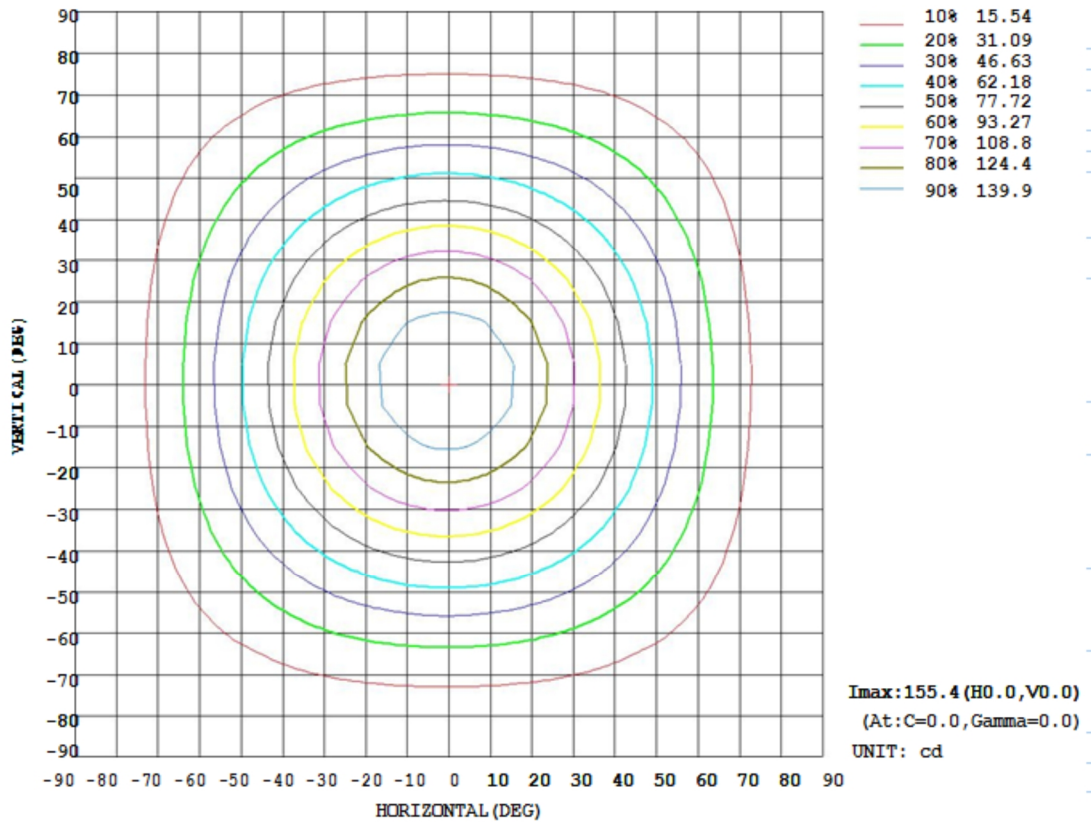
UTILIZATION FACTORS TABLE

Test:U:219.2V I:0.0490A P:5.750W PF:0.5300		Lamp Flux:450x1 lm	
NAME: MZLD-05007		TYPE:	
DIM.: 0.105m		SPEC.:	SERIAL No.:1
MFR.: Mazzetti		SUR.:(R)d=0.065m	PROTECTION ANGLE:

REFLECTANCE										
Ceiling	0.8	0.8	0.8	0.7	0.7	0.7	0.5	0.5	0.5	0
Walls	0.7	0.5	0.3	0.7	0.5	0.3	0.7	0.5	0.3	0
Working plane	0.2	0.2	0.2	0.2	0.2	0.2	0.2	0.2	0.2	0
ROOM INDEX	UTILIZATION FACTORS(PERCENT) $k(RI) \times RCR = 5$									
k = 0.60	45	37	33	45	37	33	44	37	33	28
0.80	52	45	40	51	44	40	50	44	39	35
1.00	58	51	46	57	50	46	56	51	46	41
1.25	63	56	51	62	56	51	60	55	51	46
1.50	66	60	55	65	59	55	63	58	54	49
2.00	70	65	61	69	64	60	67	63	59	54
2.50	73	68	64	71	67	63	69	65	62	57
3.00	75	71	67	73	70	66	71	67	65	59
4.00	77	74	71	76	73	70	73	70	68	62
5.00	79	76	73	77	75	72	74	72	70	64
ROOM INDEX	UF(total)									Direct
According to DIN EN 13032-2 2004							Suspended		SHRNOM = 1.25	

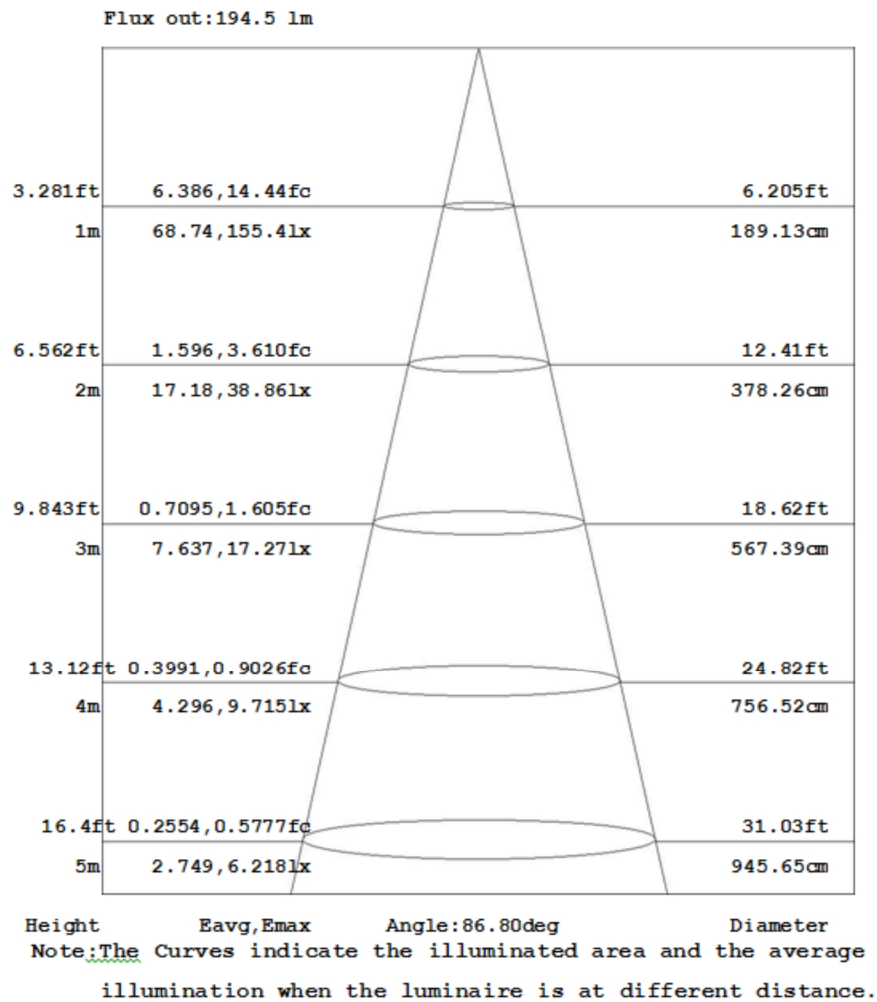
ISOCANDELA DIAGRAM

Test:U:219.2V I:0.0490A P:5.750W PF:0.5300		Lamp Flux:450x1 lm
NAME: MZLD-05007	TYPE:	
DIM.: 0.105m	SPEC.:	SERIAL No.:1
MFR.: Mazzetti	SUR.:(R)d=0.065m	PROTECTION ANGLE:



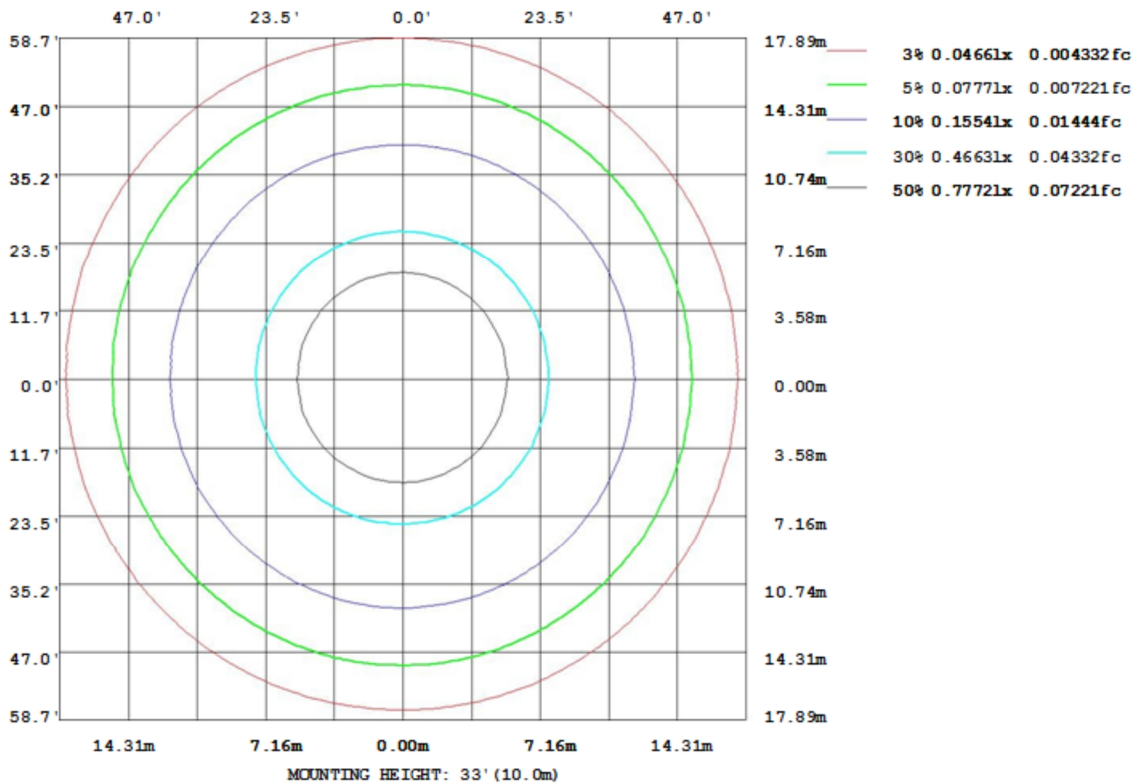
AAI Figure

Test:U:219.2V I:0.0490A P:5.750W PF:0.5300		Lamp Flux:450x1 lm
NAME: MZLD-05007	TYPE:	
DIM.: 0.105m	SPEC.:	SERIAL No.:1
MFR.: Mazzetti	SUR.:(R)d=0.065m	PROTECTION ANGLE:



ISOLUX DIAGRAM

Test:U:219.2V I:0.0490A P:5.750W PF:0.5300		Lamp Flux:450x1 lm
NAME: MZLD-05007	TYPE:	
DIM.: 0.105m	SPEC.:	SERIAL No.:1
MFR.: Mazzetti	SUR.:(R)d=0.065m	PROTECTION ANGLE:





Average Luminance Table(CIBSE)

Test:U:219.2V I:0.0490A P:5.750W PF:0.5300		Lamp Flux:450x1 lm	
NAME: MZLD-05007		TYPE:	
DIM.: 0.105m		SPEC.:	SERIAL No.:1
MFR.: Mazzetti		SUR.:(R)d=0.065m	PROTECTION ANGLE:

Parameter description for average Luminance	Symbol	Value	Unit
Luminance in Azimuth Plane	Bc	refer Table 2	cd/sq.m.
Intensity at angle Gamma in given azimuth plane	I	from data	cd/klm
Number of lamps	N	1	
Output of each lamp(initial lumens as specified)	F	450	lm
Multiplying factor	K	1	
Luminous area in horizontal plane used in calculations	A	0.0033	sq.m.
Angle to the downward vertical from light centre	Gamm a	from data	deg

Table 1. Calculation parameters for determination of CIBSE LG3:1996 Average Luminance

G deg	C plane(deg)																	
	0	10	20	30	40	50	60	70	80	90	100	110	120	130	140	150	160	170
55	25907255252545725410254262539225375254582552425573256202566125669257812588025993261462634826636																	
60	23270229682287822862227282273622734227032263322619226892284623008230992318723307235982365323964																	
65	20478202872008220062199861988219909200642008820112201492018520162201952043620480206512092821197																	
70	17563173151725717198169951717417080168801668316636167681701517298174551736517613177661794818281																	
75	14576144001433414254141771393814245143891444614483145121450414426141811447514579147951499215256																	
80	11534115781152211210114711141311130107791050010406105181083711227115671169011470118201204112164																	
85	8453 9385 9213 8384 9380 102291091511401116831178311683114361096210298 9468 8489 9409 9678 9307																	

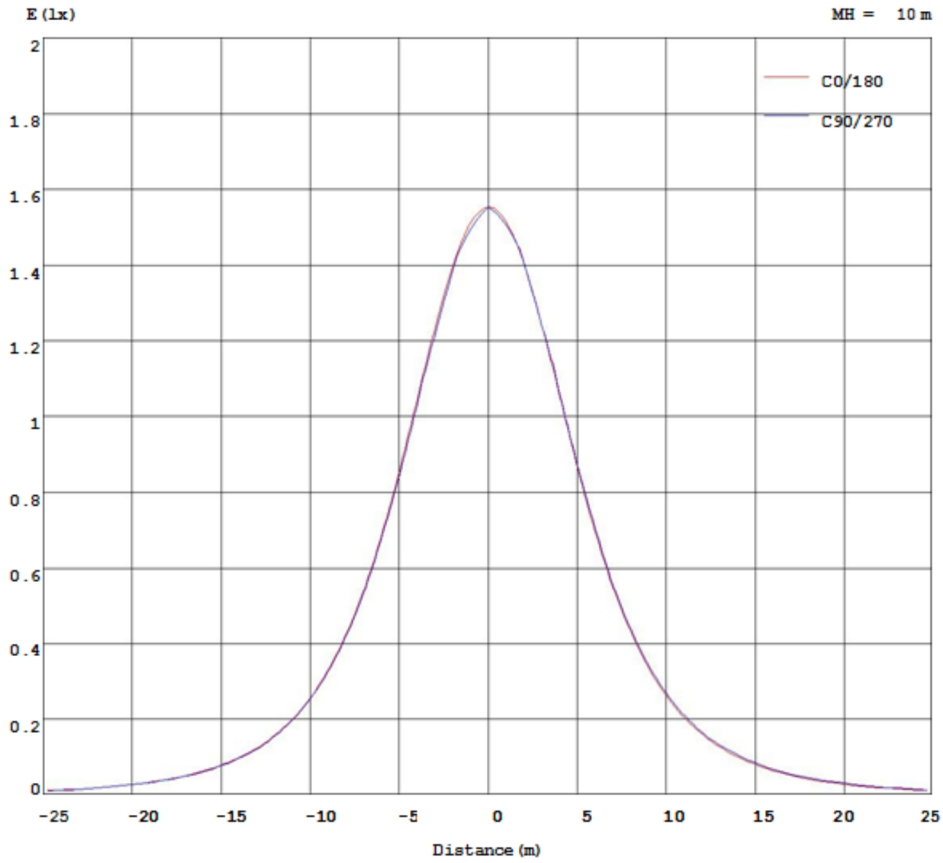
Table 2. Average Luminance(cd/sq.m.) for defined C plane,Gamma angle

CIBSE Category	Gamma (deg)	Average Luminance		Patch Luminance	
		maximum	specified	maximum	specified
		calculated	maximum	measured	maximum
Category 1	55 to 90	26636	200	---	500
Category 2	65 to 90	21197	200	---	500
Category 3	75 to 90	15256	200	---	500

Table 3. Tabulation of Average and Patch Luminance(cd/sq.m.) for defined CIBSE categories

No match

Planar Illuminance Curve





LUMINOUS DISTRIBUTION INTENSITY DATA

Test:U:219.2V I:0.0490A P:5.750W PF:0.5300		Lamp Flux:450x1 lm	
NAME: MZLD-05007		TYPE:	
DIM.: 0.105m		SPEC.:	SERIAL No.:1
MFR.: Mazzetti		SUR.:(R)d=0.065m	PROTECTION ANGLE:

Table--1

UNIT: cd

C(DEG) γ (DEG)	0	5	10	15	20	25	30	35	40	45	50	55	60	65	70	75	80	85	90
0	155	155	155	155	155	155	155	155	155	155	155	155	155	155	155	155	155	155	155
5	154	154	153	153	153	153	153	152	152	152	152	152	152	152	152	152	152	152	152
10	150	149	149	148	148	148	148	148	148	148	148	148	148	148	148	149	149	149	149
15	143	142	142	141	141	141	141	141	142	142	141	141	141	141	141	141	141	141	141
20	134	133	133	132	132	133	133	132	132	132	132	132	132	132	132	133	133	133	133
25	123	122	122	122	122	122	121	121	121	122	122	122	122	121	121	121	121	121	122
30	111	110	110	110	110	109	109	110	110	110	109	109	109	109	110	110	110	110	110
35	98.3	97.4	97.1	97.5	96.9	96.8	97.3	97.1	96.8	96.7	96.8	97.0	97.0	96.9	96.9	97.0	97.1	97.1	97.2
40	85.3	84.4	84.4	84.3	84.1	84.5	84.2	83.9	84.0	84.1	84.0	84.0	84.1	84.1	84.2	84.3	84.3	84.3	84.4
45	72.6	71.8	72.0	71.6	71.8	71.6	71.4	71.6	71.4	71.4	71.5	71.5	71.6	71.6	71.7	71.8	71.8	71.9	71.9
50	60.4	59.8	59.8	59.7	59.7	59.4	59.5	59.4	59.4	59.6	59.5	59.5	59.5	59.5	59.5	59.5	59.4	59.4	59.5
55	49.0	48.5	48.3	48.6	48.2	48.2	48.1	48.2	48.1	48.1	48.1	48.0	48.0	48.1	48.2	48.3	48.3	48.4	48.4
60	38.4	38.0	37.9	37.8	37.7	37.7	37.7	37.6	37.5	37.5	37.5	37.5	37.5	37.5	37.5	37.4	37.3	37.3	37.3
65	28.6	28.4	28.3	28.1	28.0	28.0	28.0	27.9	27.9	27.8	27.7	27.6	27.8	27.9	28.0	28.0	28.0	28.0	28.0
70	19.8	19.6	19.5	19.5	19.5	19.4	19.4	19.3	19.2	19.3	19.4	19.3	19.3	19.2	19.1	18.9	18.8	18.8	18.8
75	12.4	12.4	12.3	12.3	12.2	12.2	12.2	12.2	12.1	11.9	11.9	12.1	12.2	12.2	12.3	12.3	12.3	12.4	12.4
80	6.61	6.59	6.63	6.63	6.60	6.55	6.42	6.52	6.57	6.58	6.54	6.47	6.38	6.27	6.18	6.09	6.02	5.97	5.96
85	2.43	2.62	2.70	2.65	2.65	2.56	2.41	2.56	2.70	2.83	2.94	3.05	3.14	3.22	3.28	3.33	3.36	3.38	3.39
90	0.46	0.94	0.93	0.90	0.85	0.82	0.79	0.79	0.79	0.79	0.80	0.80	0.81	0.82	0.82	0.82	0.82	0.82	0.82

LUMINOUS DISTRIBUTION INTENSITY DATA

Test:U:219.2V I:0.0490A P:5.750W PF:0.5300		Lamp Flux:450x1 lm	
NAME: MZLD-05007		TYPE:	
DIM.: 0.105m		SPEC.:	SERIAL No.:1
MFR.: Mazzetti		SUR.:(R)d=0.065m	PROTECTION ANGLE:

Table--2 UNIT: cd

C(DEG) γ (DEG)	95	100	105	110	115	120	125	130	135	140	145	150	155	160	165	170	175	180	185
0	155	155	155	155	155	155	155	155	155	155	155	155	155	155	155	155	155	155	155
5	152	152	152	152	152	152	152	153	153	153	153	153	153	153	154	154	154	154	154
10	149	149	149	149	149	149	149	149	149	149	149	149	149	149	149	150	150	151	150
15	141	141	141	141	141	142	142	142	143	143	143	143	143	143	143	143	143	144	144
20	133	133	133	133	133	133	133	133	133	134	134	135	135	134	134	135	135	136	135
25	122	122	122	122	122	122	123	123	123	123	123	123	124	124	124	124	125	125	125
30	110	110	110	110	110	110	110	111	111	112	111	111	112	112	112	112	113	113	113
35	97.3	97.4	97.5	97.7	97.9	98.1	98.3	98.2	98.2	98.4	98.8	99.1	98.9	99.3	100	99.7	99.8	101	100
40	84.5	84.5	84.7	84.8	84.9	85.0	85.1	85.3	85.7	85.6	85.6	85.9	86.3	86.2	86.6	86.9	86.8	87.6	87.2
45	72.0	72.1	72.1	72.2	72.3	72.3	72.4	72.5	72.7	72.9	73.2	73.1	73.2	73.5	73.6	74.4	73.9	74.6	74.4
50	59.6	59.7	59.8	60.0	60.1	60.2	60.2	60.3	60.4	60.5	60.7	61.0	61.0	61.2	61.3	61.7	61.7	62.2	62.1
55	48.5	48.5	48.5	48.6	48.6	48.6	48.6	48.8	48.9	49.0	49.1	49.2	49.5	49.5	49.8	49.9	50.1	50.4	50.5
60	37.4	37.4	37.6	37.7	37.8	38.0	38.0	38.1	38.1	38.3	38.3	38.5	38.5	38.9	38.8	39.0	39.4	39.5	39.7
65	28.1	28.1	28.1	28.2	28.1	28.1	28.0	28.2	28.4	28.5	28.4	28.6	28.7	28.8	29.0	29.2	29.4	29.6	29.7
70	18.8	18.9	19.1	19.2	19.4	19.5	19.6	19.7	19.7	19.6	19.7	19.9	19.9	20.1	20.2	20.3	20.4	20.6	20.7
75	12.4	12.4	12.4	12.4	12.4	12.3	12.2	12.1	12.2	12.4	12.5	12.5	12.5	12.6	12.7	12.8	12.9	13.0	13.1
80	5.99	6.03	6.11	6.21	6.32	6.43	6.54	6.63	6.69	6.70	6.66	6.57	6.71	6.77	6.85	6.90	6.93	6.97	7.07
85	3.38	3.36	3.33	3.29	3.23	3.15	3.06	2.96	2.85	2.72	2.59	2.44	2.60	2.71	2.72	2.78	2.77	2.68	2.78
90	0.81	0.81	0.81	0.81	0.81	0.80	0.79	0.78	0.78	0.77	0.77	0.78	0.80	0.83	0.87	0.91	0.92	0.76	0.56

LUMINOUS DISTRIBUTION INTENSITY DATA

Test:U:219.2V I:0.0490A P:5.750W PF:0.5300		Lamp Flux:450x1 lm	
NAME: MZLD-05007		TYPE:	
DIM.: 0.105m		SPEC.:	SERIAL No.:1
MFR.: Mazzetti		SUR.:(R)d=0.065m	PROTECTION ANGLE:

Table-3

UNIT: cd

C(DEG) γ (DEG)	190	195	200	205	210	215	220	225	230	235	240	245	250	255	260	265	270	275	280
0	155	155	155	155	155	155	155	155	155	155	155	155	155	155	155	155	155	155	155
5	154	154	154	154	154	154	153	153	153	153	153	153	153	153	153	153	153	153	153
10	150	150	150	150	150	150	150	150	150	151	151	151	151	151	151	151	151	151	151
15	144	144	144	144	144	145	145	145	145	145	145	144	144	144	144	144	144	144	144
20	135	135	136	136	137	137	136	136	136	136	137	137	137	137	137	137	137	137	137
25	125	125	126	126	126	126	126	126	127	127	127	127	126	126	126	126	126	126	126
30	113	114	114	114	114	114	115	115	115	115	115	115	115	115	115	115	115	115	114
35	101	102	101	101	102	102	102	102	102	103	102	102	102	102	102	102	102	102	102
40	87.8	87.9	87.8	88.4	88.4	88.5	88.8	89.1	89.1	89.1	89.1	89.2	89.2	89.2	89.1	89.0	88.9	88.8	88.7
45	75.3	74.8	75.2	75.3	75.5	76.0	75.9	76.0	76.0	76.2	76.3	76.5	76.6	76.6	76.6	76.5	76.4	76.3	76.2
50	62.5	62.5	62.7	62.9	63.3	63.3	63.4	63.6	63.8	64.0	64.2	64.2	64.3	64.2	64.2	64.1	63.9	63.9	63.8
55	50.6	50.9	51.0	51.4	51.4	51.6	51.8	52.0	52.3	52.4	52.5	52.7	52.8	52.9	52.9	52.9	52.8	52.7	52.6
60	39.7	39.9	40.4	40.3	40.5	40.8	41.1	41.3	41.5	41.7	41.8	41.9	41.9	41.8	41.7	41.7	41.6	41.6	41.5
65	29.9	30.1	30.2	30.4	30.7	30.9	31.3	31.4	31.5	31.6	31.8	31.9	32.1	32.2	32.2	32.2	32.2	32.1	32.0
70	20.9	21.1	21.3	21.6	21.8	22.0	22.2	22.5	22.7	22.8	22.9	22.9	22.9	22.8	22.8	22.7	22.7	22.6	22.6
75	13.3	13.5	13.7	13.9	14.1	14.4	14.5	14.5	14.7	14.9	15.1	15.3	15.4	15.5	15.6	15.6	15.6	15.5	15.5
80	7.23	7.43	7.60	7.75	7.83	8.11	8.32	8.46	8.55	8.59	8.59	8.58	8.55	8.51	8.48	8.46	8.44	8.44	8.44
85	2.92	3.03	3.17	3.24	3.24	3.45	3.64	3.83	3.99	4.14	4.27	4.38	4.47	4.54	4.59	4.62	4.62	4.61	4.57
90	0.56	0.56	0.56	0.56	0.57	0.60	0.63	0.66	0.69	0.71	0.74	0.76	0.78	0.79	0.80	0.80	0.81	0.80	0.79

